

The ANGUTECH[®] MFH 100 has arrived.

The Next Generation of **MANFRED FRANK[®]** Concealed Hinging Technology.

Instant **TRUE 3D** Adjustment Under Full Load.

GUARANTEED No Loss of Adjustment.

Overlay, Inset & Curtain Wall. The Choice is Yours.

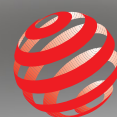
High Cycle with a 100kg Load Capacity.

ULTRA-THICK & **ULTRA-WIDE** Panel Options.

Frameless Glass-to-Glass Hinging.

Built with Cutting Edge Lightweight GFK Composite Materials.

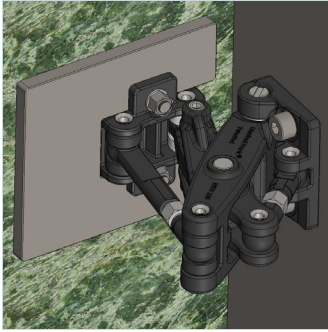
A New Range of Mounting Options and Finishes.



red**dot** design award

MANFRED FRANK HINGES ARE THE PROUD
RECIPIENT OF THE RED DOT AWARD.

The World's Most Advanced Concealed Hinging Solutions.



Ultra-thick, Ultra-thin. Any material. The MFH 100 does it all.

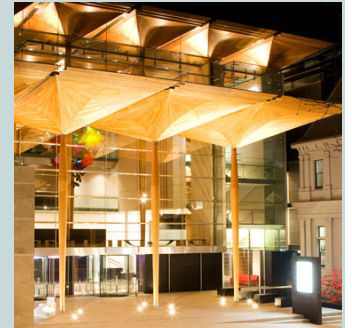
As the only concealed hinge capable of overlay, inset and curtain wall installations, the MFH 100 offers unparalleled versatility. The MFH 100 is designed to offer a clean and efficient hinging system, whether it be a pane of frameless glass or a 51mm(2") thick storage door. Achieved with a single pair of MFH 100 hinges.

Design to new heights with confidence.

A Guarantee: No loss of adjustment.

As a world first in hinging technology, Manfred Frank offers a guarantee that the MFH 100 will never go out of adjustment. Combined with an opening cycle rating over 200,000, the MFH 100 is built to last beyond the lifetime of any building. If a panel requires realignment due to frame structure settling, all you need is a single person with a spanner and allen key. You will be back to perfection in moments.

Designed to stand the test of time.



Precise adjustment under full load. Instantly.

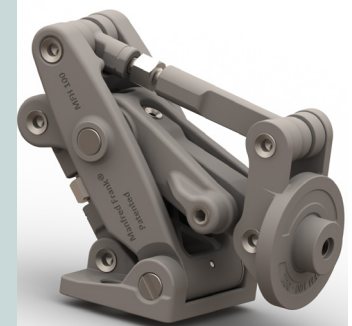
The Angutec MFH 100 maintains the same, unsurpassed range of adjustment as the Micromaster Series. With 12mm in sideways and vertical movement, 6mm in compression, we call it *TRUE 3D* adjustment. All of this is achieved by a single person with no special tools or lifting equipment.

Take advantage of installation time and **cost savings of up to 70%**.

Designed exactly for your application.

With a wide range of frame and panel mounting options, the MFH 100 is able to perfectly adapt to your design requirements. Up to 95° opening angle and a maximum panel-to-frame overhang/overlay of 25mm are achievable. A high quality, long-lasting performance can be assured everytime. Even if you want to mount a stone door to a glass wall, the MFH 100 can do it. Available in black and grey.

Multiple applications. One hinge.



Good for your project, good for the planet.

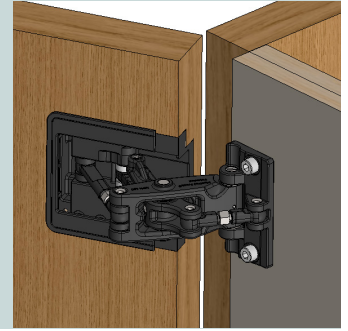
Built from fiber-reinforced polymer(GFK) and highly corrosion-resistant stainless steel, the MFH 100 is completely maintenance free throughout its lifetime. This also results in a fully recyclable product that can be reprocessed for future use.

Zero waste.

A mortised door mount for all sizes.

For use with all hollow-core or solid-core wooden doors, the MFH 100 mortised door mounts (Patent pending) will make even the largest panel installations possible for the first time. With a simple screw-in fixing, even the thickest and widest doors can be mounted perfectly aligned in a few minutes.

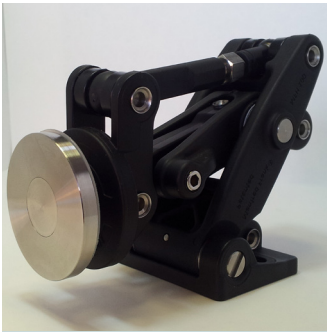
Install massive doors with minimal effort.



Single point fixings as you've never seen them before.

The ANGUTEK MFH 100 mounting options include innovative single-point-fixings. Both countersunk and clamping-disc styles are compatible with the new tamperproof cover from Manfred Frank. Removable with our custom-made tool, not even a pin is able to wedge the cover from its place. The MFH 100 also features an ingenious articulated 3D joint (Patent pending) that compensates for panel stresses and deformation.

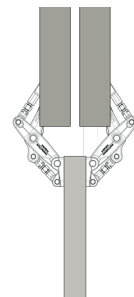
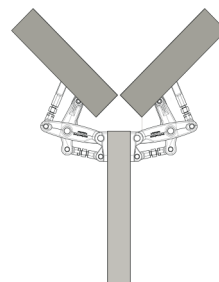
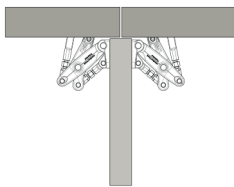
Say goodbye to visible screw heads with this seamless and secure option.



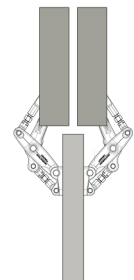
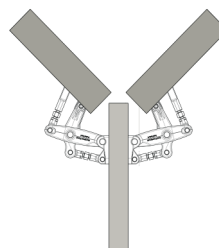
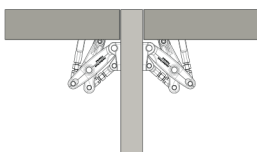
Achieve clean lines with all panel installations. A beautifully concealed hinging system.

The devil is in the details. With this in mind, the MFH-100 offers a completely concealed solution to door and panel installations with minimal gaps. No hinge barrels or other hardware is visible from the front. Lines flow uninterrupted as the designer intended. Simplified perfection.

OVERLAY

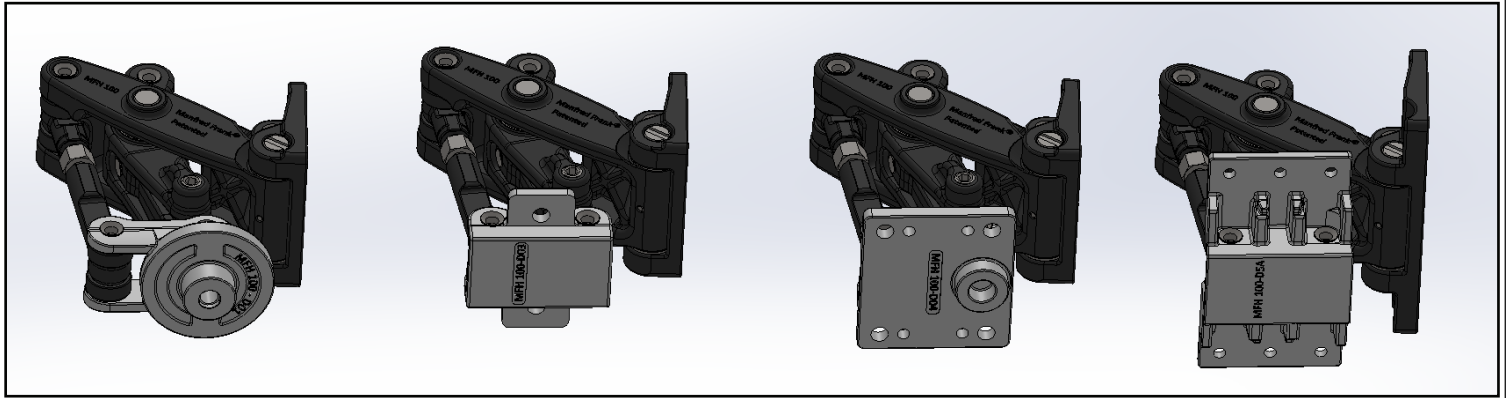


INSET



Hinge panels of any material.

The MFH 100 has mounting options for a wide range of different panel materials and styles.



Single Point Fixing
Glass, Metals, Wood

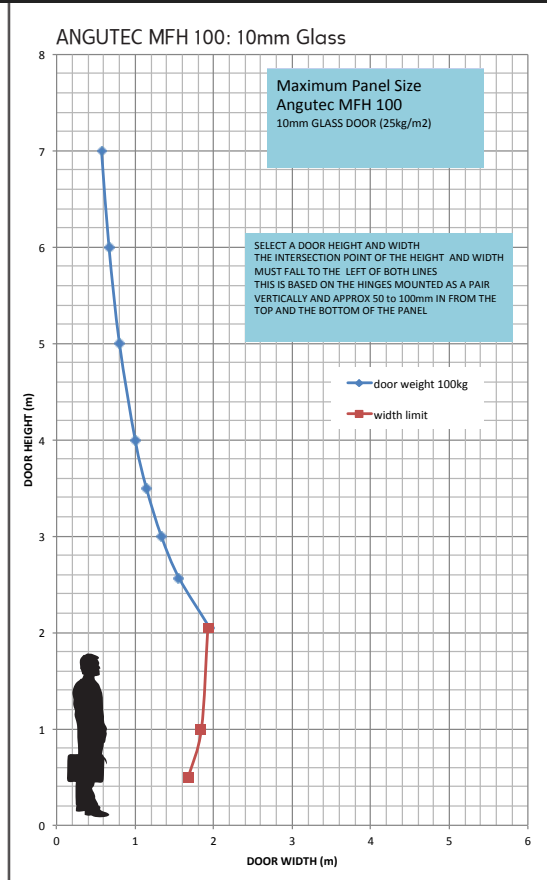
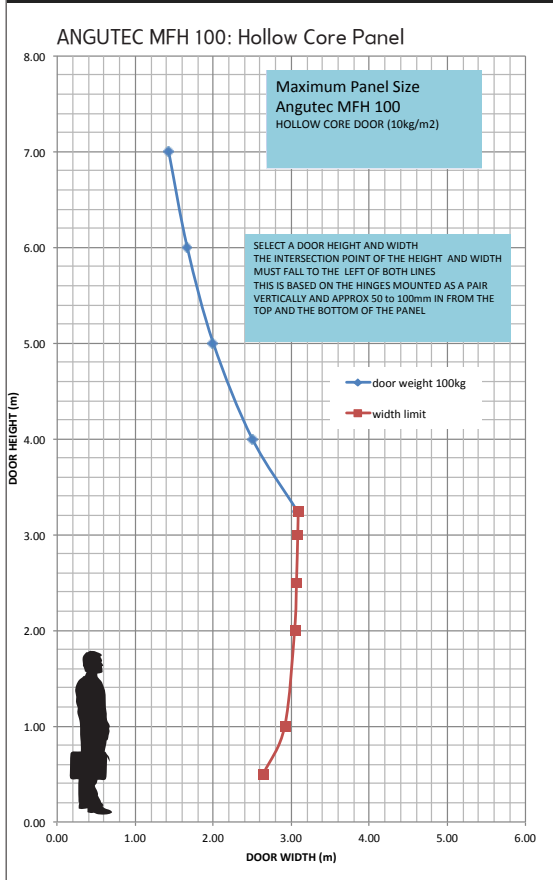
Bolted or Bonded
Glass, Metals, Extrusions, Stone

Bolted or Bonded
Metals, Stone, Wood

Door Insert
Wood
(Hollow & Solid Core)

*Not limited to materials listed.

Floor-to-Ceiling is just the beginning. The sky's the limit.



For your next project contact us at:
www.manfredfrank.com
sales@manfredfrank.com
 +64 9 272 3690